

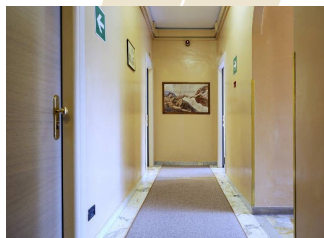


Successful design and quiet operation

Really high energy efficiency

Part of a complete system

Perfect for Retrofit



VERSATEMP EQV-X

The high efficiency packaged air-conditioning unit that uses heat pump technology and water as its source for all year round comfort



EQV-X 3 - 21

Direct expansion, high efficiency packaged air-conditioning unit. Water-to-air heat pump. Cased or uncased indoor installation.



AUTONOMOUS HEATING AND COOLING EQV-X provides fully automatic cooling, heating and air purification management in a wide range of premises, such as offices, shops, hotels and public buildings. It does not require external refrigerant gas pipes and is also an ideal solution when units or air intakes cannot be installed outdoors.



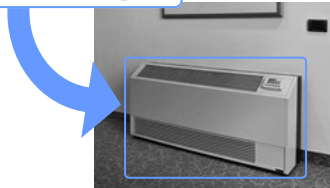
SOPHISTICATED DESIGN AND QUIET OPERATION The gentle design of the cased version blends elegantly and harmoniously into the serviced ambient. The uncased version is fully integrated into the furnishings. The compressor's specific soundproofed housing and the anti-vibration systems ensure quiet operation.

HIGH ENERGY EFFICIENCY is also obtained thanks to the rotary compressor, the three-speed fan, the electronic thermostat valve and the source side plate heat exchanger.



SAFE AND ECOFRIENDLY The on-board safety features ensure correct unit operation and high compressor performance in all operating conditions. Moreover, the use of minimal quantities of R410A ecofriendly refrigerant helps to protect the environment and guarantees additional user safety.

VERSATILE USE The specific hydronic pipe works for WLHP, city or disposable water systems, are already installed and tested on-board the unit, considerably simplifying and speeding up the installation process.



RETROFIT The uncased EQV-X is compatible with the previous Versatemp EQV, VM and VV units in terms of capacity, dimensions and connections. It is therefore a perfect retrofit solution for existing systems and for their completion or expansion.

Technical Data

Sizes			3	5	7	9	15	17	21
Total cooling capacity	(1)	kW	1.37	2.08	2.39	2.88	3.38	3.75	4.11
EER	(1)	-	3.58	4.19	3.78	4.20	4.09	4.22	4.20
Heating capacity	(2)	kW	1.68	2.33	2.73	3.10	3.82	4.17	4.68
COP	(2)	-	4.34	4.60	4.21	4.41	4.62	4.30	4.24
Rated air flow		m ³ /h	365	380	460	455	750	750	830
Fan type		-	Centrifugal						
Water flow	(1)	l/s	0.08	0.12	0.14	0.17	0.19	0.21	0.24
Compressor type		-	Rotary R410A						
Dimensions cased unit (length x depth x height)		mm	1.050 x 240 x 520		1200 x 240 x 520		1350 x 240 x 520		

Data referred to the following conditions:

Data according to EN14511:2008 and including capacity of the fan motor and of the system water pumps necessary to overcome internal pressure drops.

(1) Ambient air temperature 27°C D.B. / 19°C W.B. Inlet water temperature 30°C, outlet 35°C
 (2) Ambient air temperature 20°C D.B. Inlet water temperature 20°C

CLIVET S.p.A.
 Via Camp Lonc 25
 32032 Z.I. Villapaiera Feltre BL
 Tel. + 39 0439 3131
 Fax. + 39 0439 313382
info@clivet.it